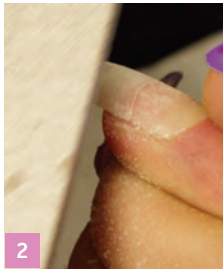




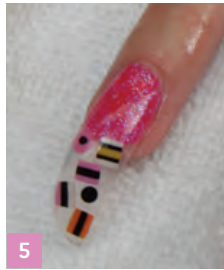
1

Welcome your client and complete a client consultation to establish your client's choice of nail tip and length. Don't forget to sanitise yourself and your client. Warm your nail art cane if necessary.

Prepare the nail bed and remove any pterygium. Then go on to cleanse the nail plate and side walls ready for the chosen tip application.



2



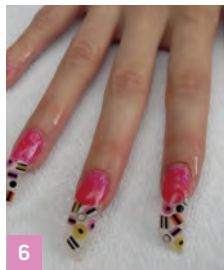
3

It is important to apply correctly fitting tips and to blend in using a suitable grit file. For this particular design, try filing at an angle to add extra dimension to your design. **IMAGE 1** Trim the nail tips to the preferred length using a couple of sharp directions. **IMAGE 2** Cleanse the nail plate and side walls. If appropriate, prime the nail plate following your product instructions. Cleanse the nail plate and side walls and if necessary, prime the nail plate following your product instructions.

Paint a neon pink base using your chosen coloured acrylic product and mix in some silver glitter to add a little bit of overall sparkle. **IMAGE 3**



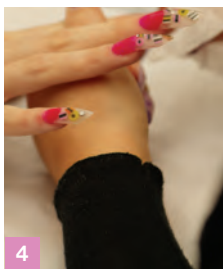
4



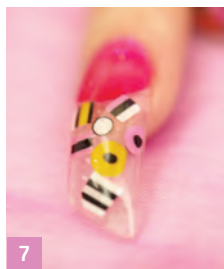
5

Pick up a very small bead of clear coloured acrylic product where you are going to place your slice of nail art cane. Whilst the coloured product is still wet, place your nail art cane slice into place using a birchwood stick. **IMAGE 4** Continue this step to place several slices into place. Continue adding the allsorts nail cane slices to the base design using angles to create an even distribution above the smile line. **IMAGE 5**

Continue your extension application by using clear acrylic with your usual size beads to create your nail enhancement zone by zone.



6



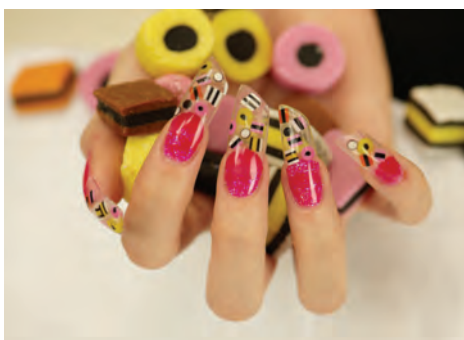
7

Refine your nail extension to remove any imperfections to achieve the chosen shape. Ensure parallel side walls have an aesthetic 'c' curve, thinning at the cuticle area and free edge. Looking down the barrels of the nails will reveal ten identical bevel shaped and thin enhancements. **IMAGE 6**

Use a buffer block to remove any further slight imperfections and then apply a shiner to create an acrylic glass-like surface.

Finally, apply cuticle oil and offer your client any appropriate after care advice. **IMAGE 7**

**Be creative and experiment as much as you can and enjoy using the many other beautiful MyTinyWorld Nails cane designs. Visit our website for more ideas.**



Images copyright: MyTinyWorld Limited