



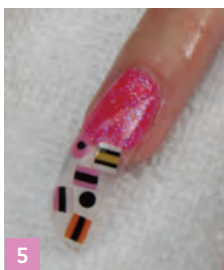
1

Welcome your client and complete a client consultation to establish your client's choice of nail tip and length. Don't forget to sanitise yourself and your client. Warm your nail art cane if necessary.

Prepare the nail bed and remove any pterygium. Then go on to cleanse the nail plate and side walls ready for the chosen tip application.



2



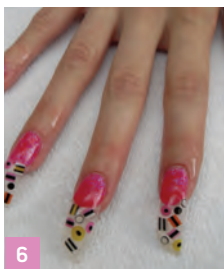
5

It is important to apply correctly fitting tips and to blend in using a suitable grit file. For this particular design, try filing at an angle to add extra dimension to your design. **IMAGE 1** Trim the nail tips to the preferred length using a couple of sharp directions. **IMAGE 2** Cleanse the nail plate and side walls. If appropriate, prime the nail plate following your product instructions. Cleanse the nail plate and side walls and if necessary, prime the nail plate following your product instructions.

Paint a neon pink base using your chosen coloured acrylic product and mix in some silver glitter to add a little bit of overall sparkle. **IMAGE 3**

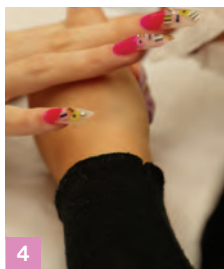


3

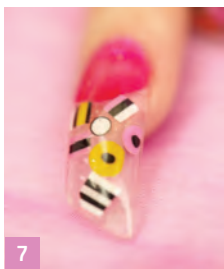


6

Pick up a very small bead of clear coloured acrylic product where you are going to place your slice of nail art cane. Whilst the coloured product is still wet, place your nail art cane slice into place using a birchwood stick. **IMAGE 4** Continue this step to place several slices into place. Continue adding the allsorts nail cane slices to the base design using angles to create an even distribution above the smile line. **IMAGE 5**



4



7

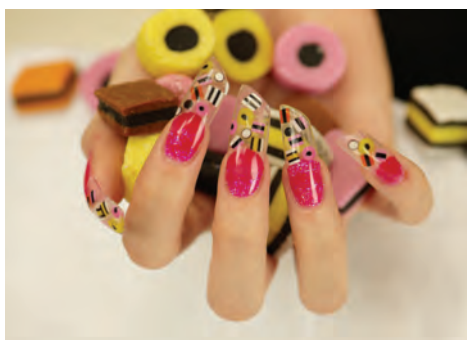
Continue your extension application by using clear acrylic with your usual size beads to create your nail enhancement zone by zone.

Refine your nail extension to remove any imperfections to achieve the chosen shape. Ensure parallel side walls have an aesthetic 'c' curve, thinning at the cuticle area and free edge. Looking down the barrels of the nails will reveal ten identical bevel shaped and thin enhancements. **IMAGE 6**

Use a buffer block to remove any further slight imperfections and then apply a shiner to create an acrylic glass-like surface.

Finally, apply cuticle oil and offer your client any appropriate after care advice. **IMAGE 7**

Be creative and experiment as much as you can and enjoy using the many other beautiful MyTinyWorld Nails cane designs. Visit our website for more ideas.

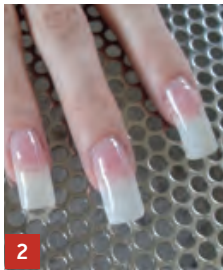


Images copyright MyTinyWorld Limited

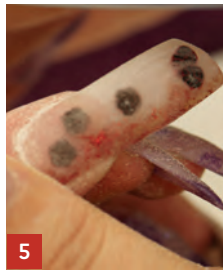


1

Welcome your client and complete a client consultation to establish your client's choice of nail tip and length. Don't forget to sanitise yourself and your client. Warm your nail art cane if necessary. Prepare the nail bed and remove any pterygium. Then go on to cleanse the nail plate and side walls ready for the chosen tip application. **IMAGE 1**

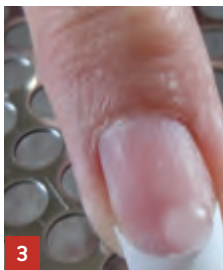


2

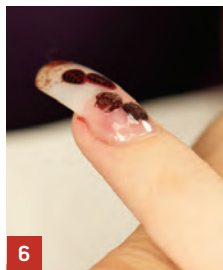


5

It is important to apply correctly fitting tips and to blend in using a suitable grit file. Trim the nail tips to the preferred length using a couple of sharp directions. Go on to cleanse the nail plate and side walls. If appropriate, prime the nail plate following your product instructions. **IMAGE 2**



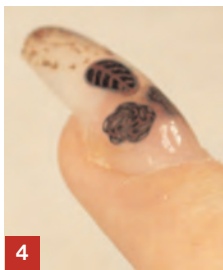
3



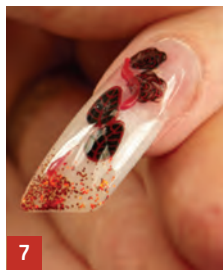
6

Firstly, paint a clear acrylic base from your chosen product. Then, using a red and very small amount of gold glitters, paint the top quarter of the nail to gain a sparkly effect. Pick up a very small bead of clear coloured acrylic product where you are going to place your slice of nail art cane. **IMAGE 3** and **IMAGE 4**

Whilst the coloured product is still wet, place your various different nail art cane slices into place using a birchwood stick. Continue until all of the nails are decorated.



4



7

Continue your extension application by using clear acrylic with your usual size beads to create your nail enhancement zone by zone. Enhance the design further by experimenting with filling in around the tips and edges of the nails with more glitter as required **IMAGE 5** and **IMAGE 6**

Refine your nail extension to remove any imperfections to achieve the chosen shape. Ensure parallel side walls have an aesthetic 'c' curve, thinning at the cuticle area and free edge. Looking down the barrels of the nails will reveal ten identical bevel shaped and thin enhancements. **IMAGE 7**

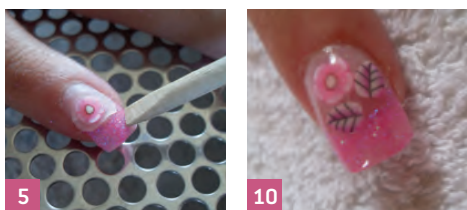
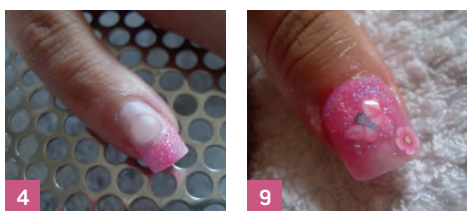
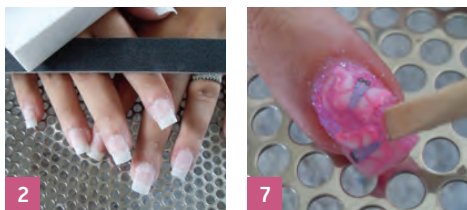
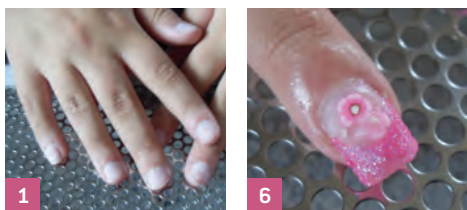
Use a buffer block to remove any further slight imperfections and then apply a shiner to create an acrylic glass-like surface.

Finally, apply cuticle oil and offer your client any appropriate after care advice.

Be creative and experiment as much as you can and enjoy using the many other beautiful MyTinyWorld Nails cane designs. Visit our website for more ideas.



Images copyright Louise Callaway and MyTinyWorld Limited



Welcome your client and complete a consultation to establish your client's choice of nail tips and length. Don't forget to sanitise yourself and your client.

Warm your nail art cane if necessary. Prepare the nail bed and remove any pterygium. Then cleanse the nail plate and side walls ready for tip application. **IMAGE 1**

It is important to apply correctly fitting tips and blend in using a suitable grit file. **IMAGE 2** Cleanse the nail plate and side walls. If applicable, prime the nail plate following your system product instructions.

Pick up a small bead of neon pink glitter and clear coloured acrylic product and apply to create a smile line towards the outside top edge. **IMAGE 3** Use this neon pink glitter and product over the base of one ring and one middle finger.

Pick up a very small bead of clear coloured acrylic product where you are going to place your slice of nail art cane. **IMAGE 4**

Whilst the coloured product is still wet, place your nail art cane slice into place using a birchwood stick. **IMAGE 5** Continue this step to place several nail art cane slices. **IMAGE 6** If you slice your canes thin enough you can add depth of layers when placing your slices. **IMAGE 7**

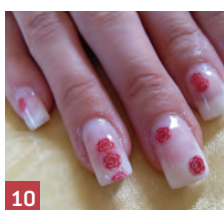
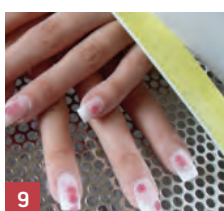
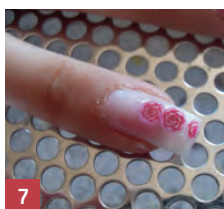
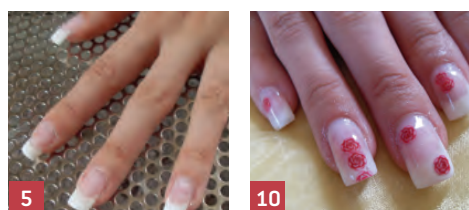
Continue your extension application by using clear acrylic with your usual size beads, to create your nail enhancement zone by zone.

Refine your nail extension to remove any imperfections achieving the chosen shape. Ensure parallel side walls have an aesthetic 'c' curve, thinning at the cuticle area and free edge. Looking down the barrels of the nails will reveal ten identical bevel shaped and thin enhancements.

Use a buffer block to remove any further slight imperfections and then a shiner to create an acrylic glass-like surface. **IMAGE 8**

Finally, apply cuticle oil and offer your client any appropriate after care advice. **IMAGE 9**

Be creative and experiment as much as you can and enjoy using the many other beautiful MyTinyWorld Nails cane designs. Visit our website for more ideas.



Welcome your client and complete a consultation to establish your client's preferred nail tip and length. Don't forget to and sanitise yourself and your client. If necessary, warm your nail art cane.

Prepare the nail bed and remove any pterygium. Then go on to cleanse the nail plate and side walls ready for tip application. It is important to apply correctly fitting tips and to blend using a suitable grit file. **IMAGE 1** Cleanse the nail plate and side walls. If appropriate, prime the nail plate following your product instructions.

Now that your nail art cane is warm, you can slice it onto wafer thin pieces which will be pliable to mould exactly to the nail shape for encapsulation.

Use a pink gel to apply your thin bonding layer of gel product and cure, according to your product curing times. **IMAGE 2** and **IMAGE 3** Use a white gel to create a smile line and colour towards the free edge and cure again, according to your product curing times. **IMAGE 4** and **IMAGE 5**

Brush on a thin layer of clear gel and cure according to your product instructions. Whilst the coloured product is still sticky, place your nail art cane slice into place using a birchwood stick. **IMAGE 6** The cane slices should mirror on both hands when placed.

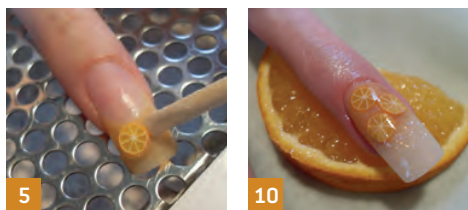
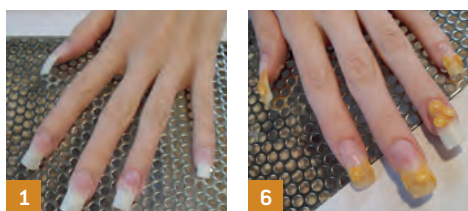
Continue your enhancement application by using the builder layer of clear gel product and cure according to your product curing times. **IMAGE 7** and **IMAGE 8**

Refine your nail extension to remove any imperfections to achieve the chosen shape. Ensure parallel side walls have an aesthetic 'c' curve, thinning at the cuticle area and free edge. Looking down the barrels of the nails will reveal ten identical bevel shaped and thin enhancements. **IMAGE 9**

Apply a final sealer layer of gel and cure according to your product curing times. Remove the sticky residue with a UV gel wipe. **IMAGE 10**

Finally, apply cuticle oil and offer your client any appropriate after care advice.

Be creative and experiment as much as you can and enjoy using the many other beautiful MyTinyWorld Nails cane designs. Visit our website for more ideas.



Welcome your client and complete a consultation to establish your client's choice of nail tips and length. Don't forget to sanitise yourself and your client. Warm your nail art cane if necessary.

Prepare the nail bed and remove any pterygium. Then cleanse the nail plate and side walls ready for tip application.

It is important to apply correctly fitting tips and to blend in using a suitable grit file. **IMAGE 1** Go on to cleanse the nail plate and side walls. If appropriate, prime the nail plate following your product instructions.

Pick up a small bead of light orange product and apply to create a smile line towards the free edge. **IMAGE 2** Use light orange product over the base of one ring up to the smile line. **IMAGE 3**

Now your nail art cane is warm, you can slice wafer thin pieces which will be pliable to mould exactly to the nail shape for encapsulation.

Pick up a very small bead of clear coloured acrylic product where you are going to place your slice of nail art cane. **IMAGE 4** Whilst your coloured product is still wet, place your nail cane slice into place using a birchwood stick. **IMAGE 5** Continue this step to place several nail art cane slices into place **IMAGE 6**

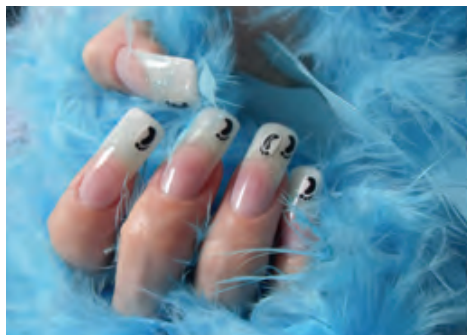
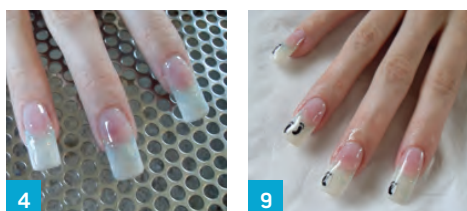
Continue the base of the design for each finger with gold glittered acrylic product on the nail plate and on the smile line to the free edge of the ring finger. **IMAGE 7** and **IMAGE 8** Continue your extension application by using clear acrylic with your usual size beads to create your nail enhancement zone by zone.

Refine your nail extension to remove any imperfections to achieve the chosen shape. Ensure parallel side walls have an aesthetic 'c' curve, thinning at the cuticle area and free edge. Looking down the barrels of the nails will reveal ten identical bevel shaped and thin enhancements. Use a buffer block to remove any further slight imperfections and then a shiner to create an acrylic glass-like surface. **IMAGE 9** and **IMAGE 10**

Finally, apply cuticle oil offer your client any appropriate after care advice.

Be creative and experiment as much as you can and enjoy using the many other beautiful MyTinyWorld Nails cane designs. Visit our website for more ideas.

Images copyright Louise Callaway and MyTinyWorld Limited



Welcome your client and complete a consultation to establish their preferred nail tip and length. Don't forget to sanitise yourself and your client.

If necessary, warm your nail art cane. Prepare the nail bed and remove any pterygium. Then cleanse the nail plate and side walls ready for tip application. **IMAGE 1** It is important to apply correctly fitting tips and to blend in using a suitable grit file. **IMAGE 2**

Cleanse the nail plate and side walls. If applicable, prime the nail plate following your product instructions. Now your nail art cane is warm, you can slice wafer thin pieces which will be pliable to mould exactly to the nail shape for encapsulation.

Use a pink gel to apply your thin bonding layer of gel product and cure according to your product curing times. **IMAGE 3** and **IMAGE 4**

Use a white gel to create a smile line and colour towards the free edge and cure according to your product curing times. Now use a light blue gel with glitter to blend over the smile line on to the pink nail bed. Creating a shimmer of coloured gel over the centre of the nails. **IMAGE 5**

Whilst your coloured product is still sticky, place your nail art cane slice into place using a birchwood stick. **IMAGE 6** Continue your enhancement application by using the builder layer of clear gel product and cure, according to your product curing times.

Refine your nail extension to remove any imperfections to achieve the chosen shape. Ensure parallel side walls have an aesthetic 'c' curve thinning at the cuticle area and free edge. Looking down the barrels of the nails will reveal ten identical bevel shaped and thin enhancements. **IMAGE 7** and **IMAGE 8**

Apply your final sealer layer of gel and cure according to your product curing times. Remove the sticky residue with a UV gel wipe. **IMAGE 9**

Finally, apply cuticle oil and offer your client any appropriate after care advice. **IMAGE 10**

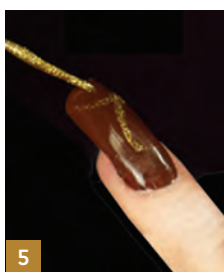
Be creative and experiment as much as you can and enjoy using the many other beautiful MyTinyWorld Nails cane designs. Visit our website for more ideas.



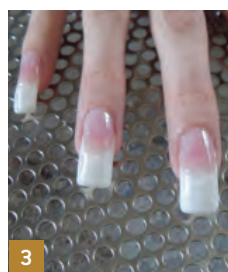
1



2



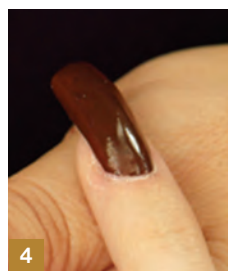
5



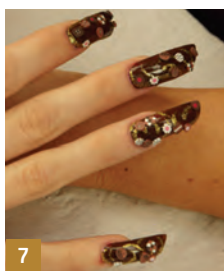
3



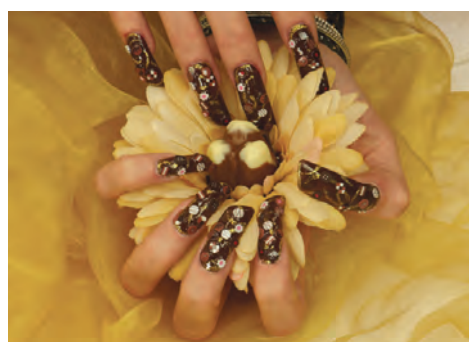
6



4



7



Welcome your client and complete a client consultation to establish your client's choice of nail tip and length. Don't forget to sanitise yourself and your client. Warm your nail art cane if necessary.

Prepare the nail bed and remove any pterygium. Then go on to cleanse the nail plate and side walls ready for the chosen tip application.

It is important to apply correctly fitting tips and to blend in using a suitable grit file. **IMAGE 1** Trim the nail tips to the preferred length using a couple of sharp directions. **IMAGE 2** and **IMAGE 3** For this particular design, try filing at an angle to add extra dimension to your 3D design. Cleanse the nail plate and side walls. If appropriate, prime the nail plate following your product instructions.

Firstly, paint a rich milk or dark chocolate brown base from your chosen acrylic product. **IMAGE 4** Then, using a gold glitter, paint some swirls to form the base design of the nail **IMAGE 5**

Pick up a very small bead of clear coloured acrylic product where you are going to place your slice of nail art cane. Whilst the coloured product is still wet, place your various different nail art cane slices into place using a birchwood stick **IMAGE 6** Continue until all of the nails are decorated.

Continue your extension application by using clear acrylic with your usual size beads to create your nail enhancement zone by zone. Enhance the design further by filling in around the tips and edges of the nails with more gold glitter swirls.

Refine your nail extension to remove any imperfections to achieve the chosen shape. Ensure parallel side walls have an aesthetic 'c' curve, thinning at the cuticle area and free edge. Looking down the barrels of the nails will reveal ten identical bevel shaped and thin enhancements. **IMAGE 7**

Use a buffer block to remove any further slight imperfections and then apply a shiner to create an acrylic glass-like surface.

Finally, apply cuticle oil and offer your client any appropriate after care advice.

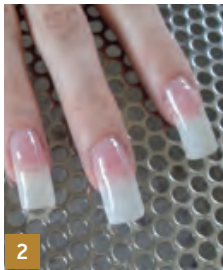
Be creative and experiment as much as you can and enjoy using the many other beautiful MyTinyWorld Nails cane designs. Visit our website for more ideas.



1

Welcome your client and complete a client consultation to establish your client's choice of nail tip and length. Don't forget to sanitise yourself and your client. Warm your nail art cane if necessary.

Prepare the nail bed and remove any pterygium. Then go on to cleanse the nail plate and side walls ready for the chosen tip application.



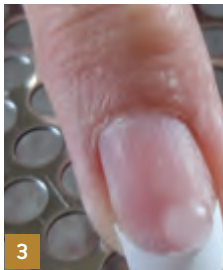
2



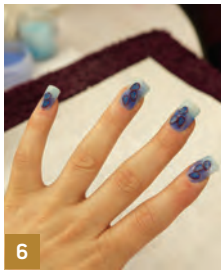
5

It is important to apply correctly fitting tips and to blend in using a suitable grit file **IMAGE 1**. Trim the nail tips to the preferred length using a couple of sharp directions **IMAGE 2**. If appropriate, prime the nail plate following your product instructions.

Using a mixture of pale and dark blue acrylic powders from your chosen product range, paint a pastel blue nail base, adding a sprinkling of silver glitter which will catch the light. Then, using a gold glitter, paint some swirls to form the base design of the nail.



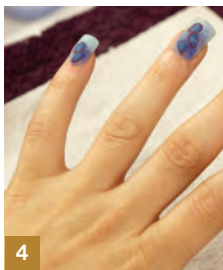
3



4

Pick up a very small bead of clear coloured acrylic product where you are going to place your slice of nail art cane. **IMAGE 3** Whilst the coloured product is still wet, place your various different nail art cane slices into place using a birchwood stick **IMAGE 4** Continue until all of the nails are decorated **IMAGE 5**

Continue your extension application by using clear acrylic with your usual size beads to create your nail enhancement zone by zone **IMAGE 5** and **IMAGE 6**



6



7

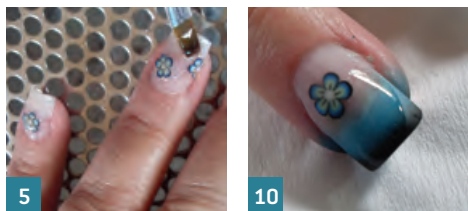
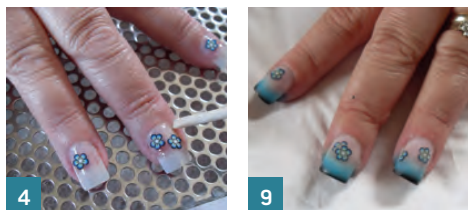
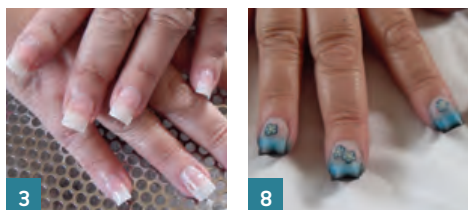
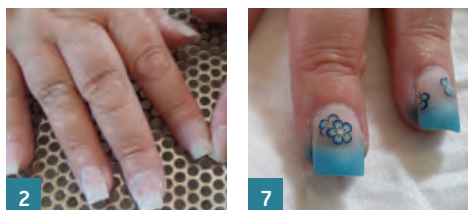
Refine your nail extension to remove any imperfections to achieve the chosen shape. Ensure parallel side walls have an aesthetic 'c' curve, thinning at the cuticle area and free edge. Looking down the barrels of the nails will reveal ten identical bevel shaped and thin enhancements. **IMAGE 7**

Use a buffer block to remove any further slight imperfections and then apply a shiner to create an acrylic glass-like surface.

Finally, apply cuticle oil and offer your client any appropriate after care advice.

Be creative and experiment as much as you can and enjoy using the many other beautiful MyTinyWorld Nails cane designs. Visit our website for more ideas.

Images copyright MyTinyWorld Limited



Welcome your client and complete a consultation to establish your client's preferred nail tip and length. Don't forget to sanitise yourself and your client.

Warm your nail art cane if necessary. Prepare the nail bed and remove any pterygium. Go on to cleanse the nail plate and side walls ready for tip application. **IMAGE 1**

It is important to apply correctly fitting tips and to blend in using a suitable grit file. **IMAGE 2** Cleanse the nail plate and side walls. If applicable, prime the nail plate following your product instructions.

Now your nail art cane is warm, you can slice wafer thin pieces which will be pliable to mould exactly to the nail shape for encapsulation.

Use a pink gel to apply your thin bonding layer of gel product and cure, according to your product curing times. **IMAGE 3** Whilst your coloured product is still sticky, place your nail art cane slice into place using a birchwood stick. **IMAGE 4** Continue your enhancement application by using the builder layer of clear gel product and cure according to your product curing times. **IMAGE 5**

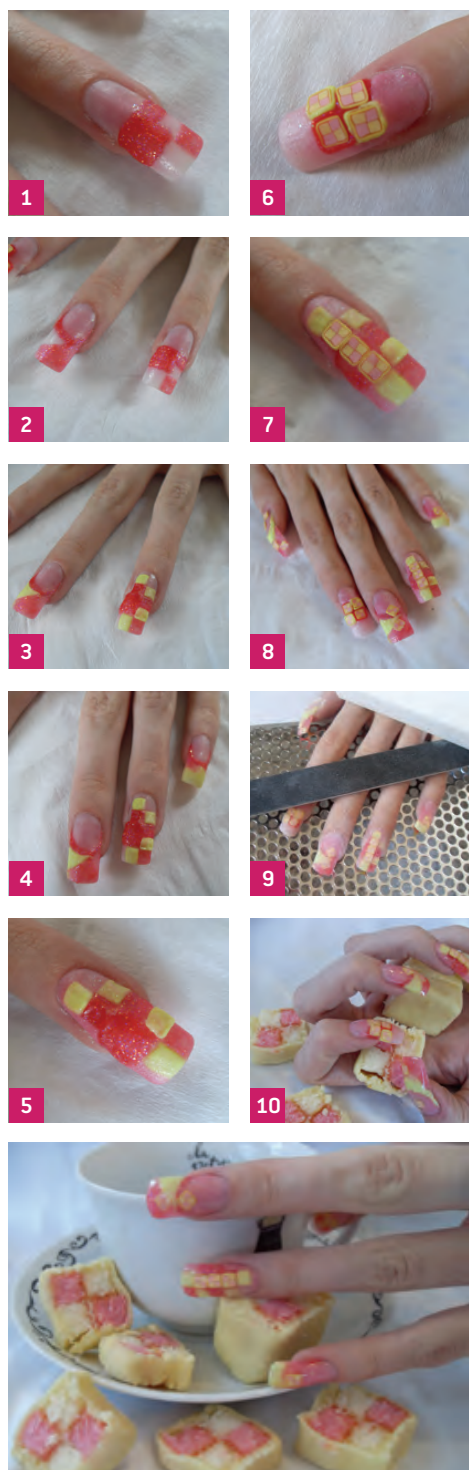
Refine your nail extension to remove any imperfections to achieve the chosen shape. Ensure parallel side walls have an aesthetic 'c' curve, thinning at the cuticle area and free edge. Looking down the barrels of the nails will reveal ten identical bevel shaped and thin enhancements. **IMAGE 6** and **IMAGE 7** Apply your final sealer layer of gel and cure, according to your system product curing times. Remove the sticky residue with a UV gel wipe.

You could enhance your work even further by using an airbrush. Spray from the smile line to the free edge with a blue. **IMAGE 8** and **IMAGE 9** Then airbrush only the free edge over the blue with black.

Apply a thin layer of top coat **IMAGE 10** and use a birchwood stick to adhere a blue rhinestone.

Finally, apply cuticle oil and offer your client any appropriate after care advice.

Be creative and experiment as much as you can and enjoy using the many other beautiful MyTinyWorld Nails cane designs. Visit our website for more ideas.



Images copyright Louise Callaway and MyTinyWorld Limited

Welcome your client and complete a consultation to establish your client's preferred nail tip and length. Don't forget to sanitise yourself and your client. Warm your nail art cane if necessary.

Prepare the nail bed and remove any pterygium. Then cleanse the nail plate and side walls ready for tip application. Apply correctly fitting tips and blend in using an appropriate grit file. Cleanse the nail plate and side walls. If applicable, prime the nail plate following your system product instructions.

Pick up a small bead of dark pink coloured acrylic product and apply to the nails **IMAGE 1** - making various shapes to create an interesting base and always thinking ahead of where you would like to place your nail art cane slices. **IMAGE 2** Continue the base of your design using yellow coloured acrylic product. **IMAGE 3** Be careful not to overlap the dark pink product - just building a coloured base - still thinking ahead of where you would like to place your next cane slices. **IMAGE 4**

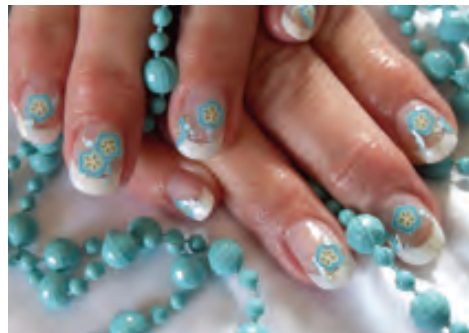
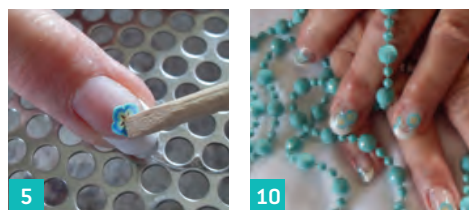
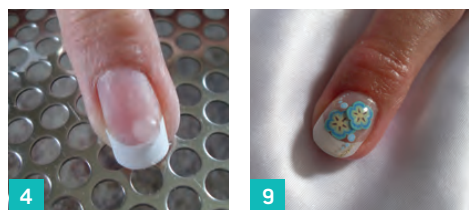
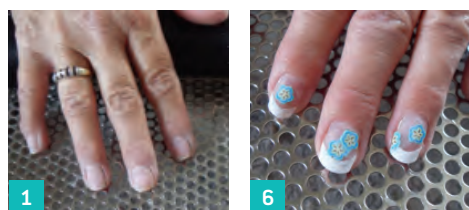
Fill any space on the nails with light pink coloured acrylic product. **IMAGE 5** and **IMAGE 6** Now your nail art cane is warm, you can slice it into wafer thin pieces which will be pliable to mould exactly to the nail shape for encapsulation.

Pick up a very small bead of clear coloured acrylic product and place where you are going to begin adding your slices of nail art cane. **IMAGE 7** Whilst your coloured product is still wet, place your nail art slice into place using a birchwood stick. **IMAGE 8** Continue this step to place several nail art cane slices into place. Continue your extension application by using clear acrylic with your usual size beads to create your nail enhancement zone by zone.

Refine your nail extension to remove any imperfections to achieve the chosen shape. Ensure parallel side walls have an aesthetic 'c' curve, thinning at the cuticle area and free edge. Looking down the barrels of the nails will reveal ten identical bevel shaped and thin enhancements. Use a buffer block to remove any further slight imperfections and then a shiner to create an acrylic glass-like surface. **IMAGE 9**

Finally, apply cuticle oil and offer your client any appropriate after care advice. **IMAGE 10**

Be creative and experiment as much as you can and enjoy using the many other beautiful MyTinyWorld Nails cane designs. Visit our website for more ideas.



Welcome your client and complete a consultation to establish your client's choice of nail tip and length. Don't forget to sanitise yourself and your client. Warm your nail art cane if necessary. **IMAGE 1**

Prepare the nail bed and remove any pterygium. Go on to cleanse the nail plate and side walls ready for tip application.

It is important to apply correctly fitting white tips **IMAGE 2** then cut and shape to the required length and shape. **IMAGE 3** Cleanse the nail plate and side walls. If applicable, prime the nail plate following your product instructions.

Now your nail art cane is warm, you can slice wafer thin pieces which will be pliable to mould exactly to the nail shape for encapsulation.

Pick up a very small bead of clear coloured acrylic product where you are going to place your slice of nail art cane. **IMAGE 4**

Whilst your coloured product is still wet, place your nail art cane slice into place using a birchwood stick. **IMAGE 5** Continue this step to place several nail art cane slices into place **IMAGE 6**

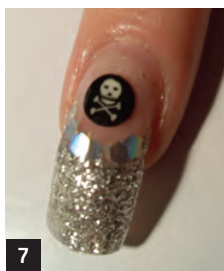
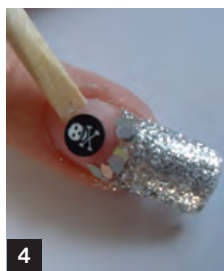
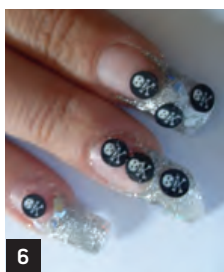
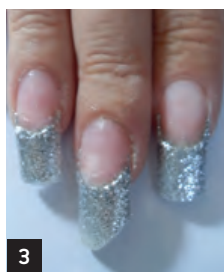
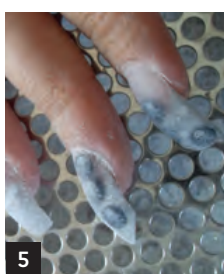
Continue your extension application by using clear acrylic with your usual size beads to create your nail enhancement zone by zone. **IMAGE 7**

Refine your nail extension to remove any imperfections to achieve the chosen shape. Ensure parallel side walls have an aesthetic 'c' curve thinning at the cuticle area and free edge. Looking down the barrels of the nails will reveal ten identical bevel shaped and thin enhancements. **IMAGE 8**

Use a buffer block to remove any further slight imperfections and then a shiner to create an acrylic glass-like surface. You could further enhance your work even more by using a special effects tool to dot on an aqua stem. **IMAGE 9**

Finally, apply cuticle oil and offer your client any appropriate after care advice. **IMAGE 10**

Be creative and experiment as much as you can and enjoy using the many other beautiful MyTinyWorld Nails cane designs. Visit our website for more ideas.



Welcome your client and complete a client consultation to establish your client's choice of nail tip and length. Don't forget to sanitise yourself and your client. Warm your nail art cane if necessary.

Prepare the nail bed and remove any pterygium. Then go on to cleanse the nail plate and side walls ready for the chosen tip application.

It is important to apply correctly fitting tips and to blend in using a suitable grit file. **IMAGE 1** Trim the nail tips to the preferred length using a couple of sharp directions. **IMAGE 2** Cleanse the nail plate and side walls. If appropriate, prime the nail plate following your product instructions.

Pick up a small bead of silver glitter and clear coloured acrylic product and apply to create a smile line towards the outside top edge. **IMAGE 3**

Continue adding glitter to the base design using chunky hexagonal glitter pieces, distributed evenly above the smile line. **IMAGE 4**

Pick up a very small bead of clear coloured acrylic product where you are going to place your slice of nail art cane. Whilst the coloured product is still wet, place your nail art cane slice into place using a birchwood stick. **IMAGE 5** Continue this step to place several slices into place.

Continue your extension application by using clear acrylic with your usual size beads to create your nail enhancement zone by zone.

Refine your nail extension to remove any imperfections to achieve the chosen shape. Ensure parallel side walls have an aesthetic 'c' curve, thinning at the cuticle area and free edge. Looking down the barrels of the nails will reveal ten identical bevel shaped and thin enhancements. **IMAGE 6**

Use a buffer block to remove any further slight imperfections and then apply a shiner to create an acrylic glass-like surface.

Finally, apply cuticle oil and offer your client any appropriate after care advice. **IMAGE 7**

Be creative and experiment as much as you can and enjoy using the many other beautiful MyTinyWorld Nails cane designs. Visit our website for more ideas.